

U.S. Army Public Health Center

Army Influenza Activity Report

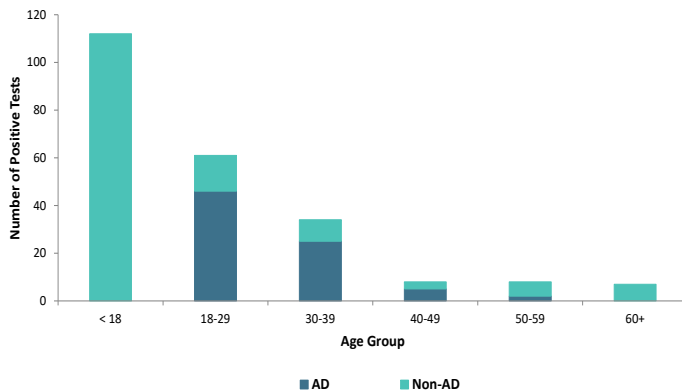
Week ending 23 April 2022 (Week 16)

SUMMARY

Influenza activity is decreasing in the Army population. Three hundred and forty positive influenza A and five influenza B specimens were reported during surveillance week 16. One influenza-associated hospitalization was reported in week 16; the season total thus far is twenty-three compared to four influenza-associated hospitalizations reported as of this time last season. Of the specimens that tested positive for select respiratory illnesses, among non-AD beneficiaries, 73.7% were collected from individuals younger than 18 during surveillance week 16. Among AD service members, 59.0% of positive specimens were collected from individuals 18-29 years of age. Nationwide, influenza activity has slightly decreased in most areas of the country with 7.8% of specimens tested by clinical laboratories being positive for influenza A or B.

DEMOGRAPHICS

Positive Respiratory Specimen Results from Army MTFs by Age Group and Beneficiary Status, Week 16



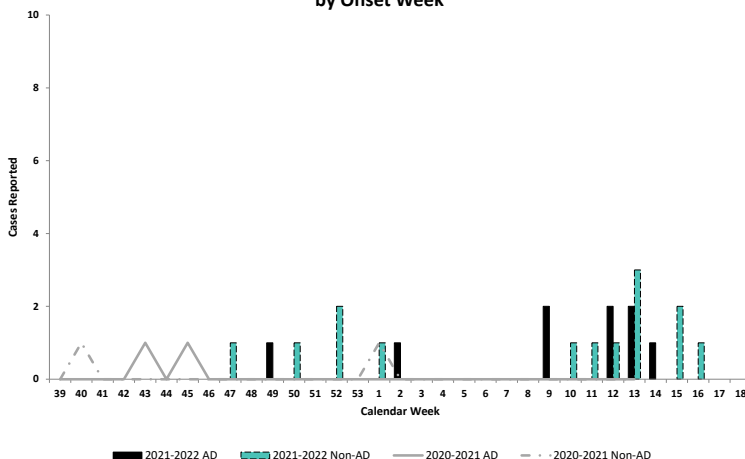
AD: Seventy-eight positive respiratory specimens were collected from active-duty (AD) service members (SMs) during week 16; 59.0% (n=46) of the positive specimens were collected from SMs 18-29 years of age.

Non-AD: One hundred and fifty-two positive respiratory specimens were collected from non-AD individuals during week 16; 73.7% (n=112) of the positive specimens were collected from individuals under 18 years of age.

The age and beneficiary status of some cases were not available. Therefore, all calculations involving these variables were conducted using only available data. Differences in total results, and age- and beneficiary status-specific results may be noted throughout the report.

INFLUENZA-ASSOCIATED HOSPITALIZATIONS

Army Influenza-Associated Hospitalizations Reported in DRSi by Onset Week



One influenza-associated hospitalization with an onset date in week 16 was reported to the Disease Reporting System internet (DRSi); the case was a non-AD individual. The season total thus far is twenty-three hospitalizations. During the 2020-2021 season, no hospitalizations were reported in week 16 (with four hospitalizations reported from the start of the season through week 16).

The DRSi does not capture cases older than 65 years old for influenza-associated hospitalizations.

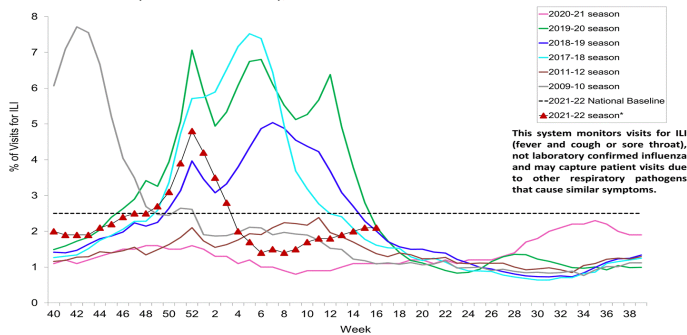
Data are preliminary and subject to change.

Questions?
[Email APHC DEP](mailto:APHC_DEP)

ILI ACTIVITY - UNITED STATES

ILI ACTIVITY - ARMY

Percentage of Outpatient Visits for Respiratory Illness Reported by The U.S. Outpatient Influenza-like Illness Surveillance Network (ILINet), Weekly National Summary, 2021-2022* and Selected Previous Seasons

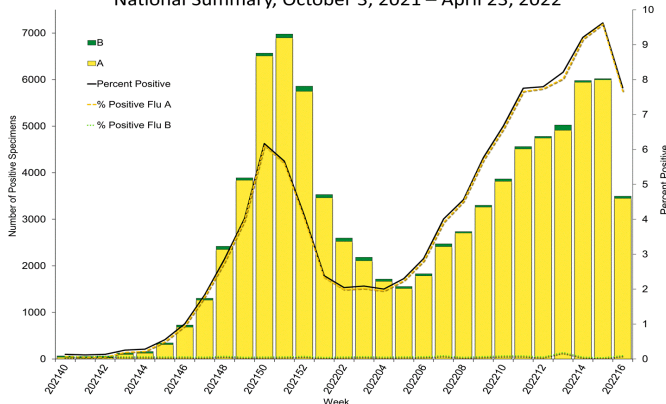


Data Unavailable

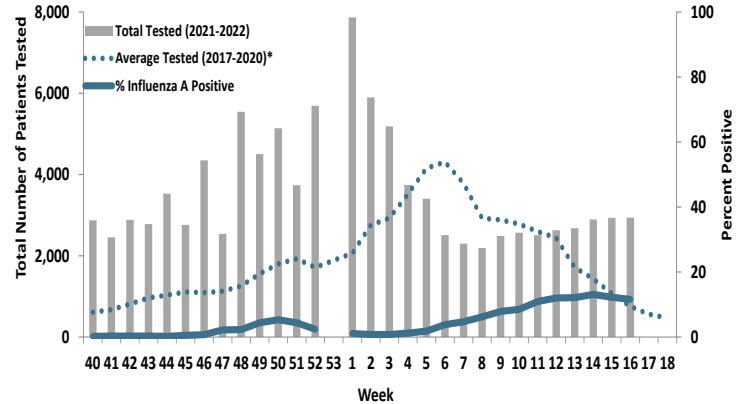
Nationwide in week 16, incident ILI activity was 2.1%; this is below the national baseline of 2.5%. At the time of publishing, incident ILI activity data for the Army population were unavailable.

LABORATORY RESPIRATORY SPECIMEN TESTING

Influenza Positive Tests Reported to CDC by U.S. Clinical Laboratories, National Summary, October 3, 2021 – April 23, 2022



Proportion of Positive Influenza A Specimens for U.S. Army 2021-2022



Nationwide during week 16, a total of 44,994 specimens were tested for influenza by select clinical laboratories and submitted to the CDC; 3,494 (7.8%) were positive. Influenza A accounted for 98.8% (n=3,451) of the total positive specimens. In the Army population, 340 (11.6%) of the 2,939 specimens tested for influenza A were positive in week 16.

Data from the 2020-2021 influenza season are not included in the Army's average tested calculation due to the unusually low incidence of influenza.

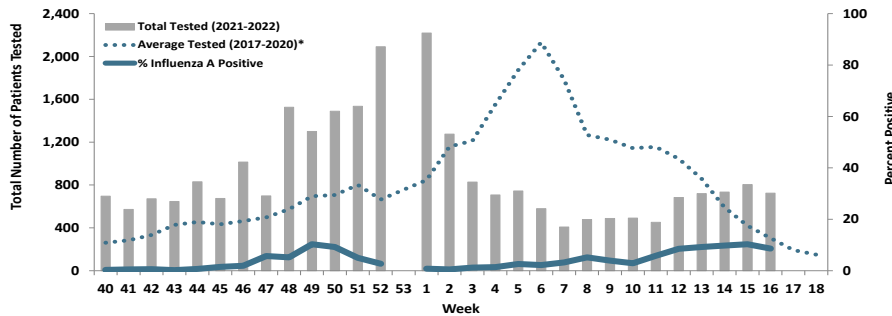
		Week 13	Week 14	Week 15	Week 16	Season Total
Army MTF Laboratory Results, 2021-22	Adenovirus	11	12	20	9	351
	Enterovirus	2	6	5	4	298
	Influenza A	324	379	375	340	4,077
	Influenza B	10	15	13	5	233
	Parainfluenza	14	10	15	20	337
	RSV	14	10	11	21	1,294
	Negative	6,461	6,885	7,546	7,420	249,472
	Total	6,836	7,317	7,985	7,819	256,062

Of the 7,819 test results for respiratory illnesses during week 16, 5.1% (n=399) were positive for any type of respiratory illness. Influenza A accounted for 85.2% (n=340), respiratory syncytial accounted for 5.3% (n=21), parainfluenza accounted for 5.0% (n=20), adenovirus accounted for 2.3% (n=9), influenza B accounted for 1.3% (n=5), and enterovirus accounted for 1.0% (n=4) of the positive results.

Locations providing week 16 laboratory data as of 26 April 2022: Carlisle Barracks, Ft. Belvoir, Ft. Benning, Ft. Bliss, Ft. Bragg, Ft. Campbell, Ft. Carson, Ft. Drum, Ft. Eustis, Ft. Gordon, Ft. Hood, Ft. Irwin, Ft. Jackson, Ft. Knox, Ft. Leavenworth, Ft. Lee, Ft. Leonard Wood, Ft. Lewis, Ft. Meade, Ft. Polk, Ft. Riley, Ft. Rucker, Ft. Sam Houston, Ft. Sill, Ft. Stewart, Ft. Wainwright, Korea, Landstuhl Regional Medical Center, Redstone Arsenal, Tripler Army Medical Center, the U.S. Military Academy, and Walter Reed National Military Medical Center.

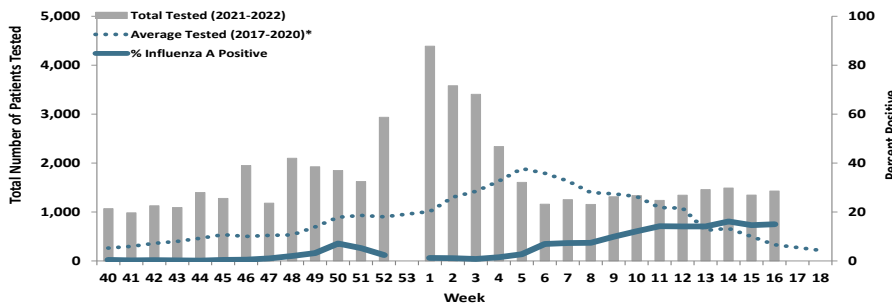
Proportion of Influenza A Positive Specimens by Week and Region, Army Medical Laboratories, 2021-2022 as Compared to 2017-2020*

Regional Health Command - Atlantic (RHC-A)



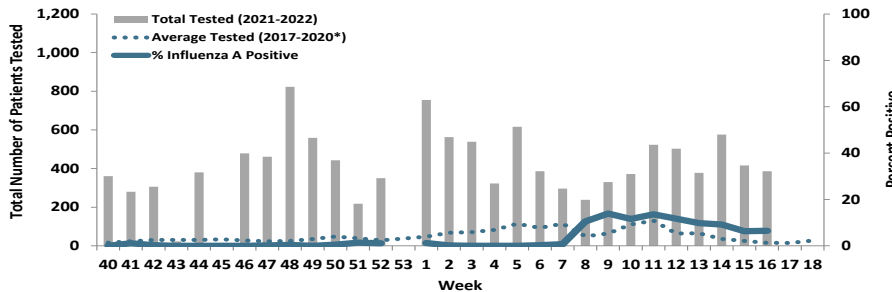
Week 16			
Age Group	AD	Non-AD	Season Total
< 18	0	29	344
18-29	12	5	492
30-39	9	2	131
40-49	1	0	39
50-59	0	2	32
60+	0	1	34
Total	22	39	1,072

Regional Health Command - Central (RHC-C)



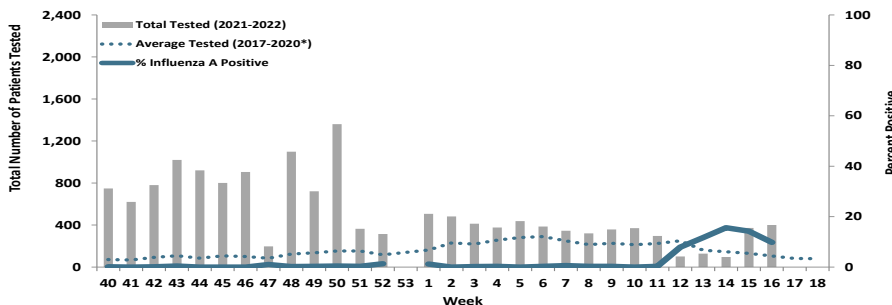
Week 16			
Age Group	AD	Non-AD	Season Total
< 18	0	38	410
18-29	27	7	509
30-39	7	6	186
40-49	2	2	58
50-59	1	3	41
60+	0	3	60
Total	37	59	1,264

Regional Health Command - Europe (RHC-E)



Week 16			
Age Group	AD	Non-AD	Season Total
< 18	0	7	65
18-29	5	2	273
30-39	5	1	54
40-49	2	1	16
50-59	1	1	6
60+	0	0	3
Total	13	12	417

Regional Health Command - Pacific (RHC-P)



Week 16			
Age Group	AD	Non-AD	Season Total
< 18	0	0	1
18-29	1	0	11
30-39	0	0	0
40-49	0	0	1
50-59	0	0	1
60+	0	2	2
Total	1	2	16

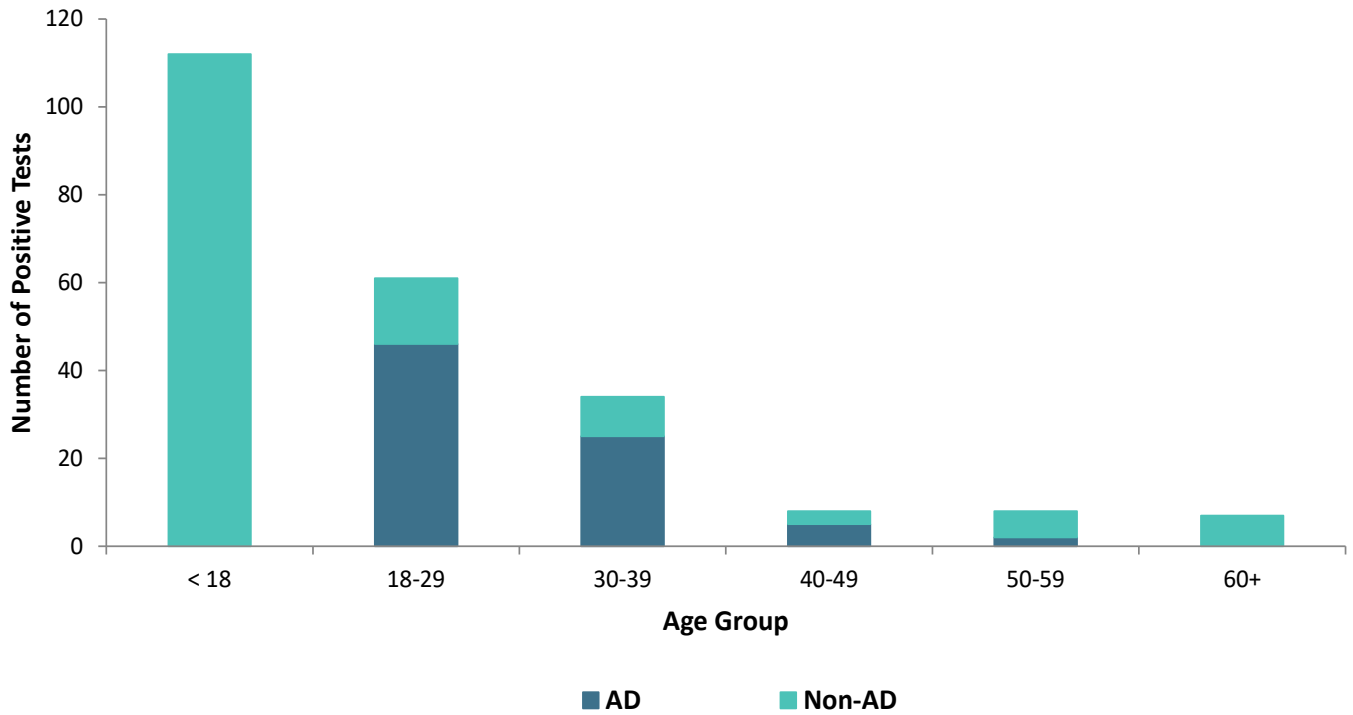
*2017/2018 influenza season - 2019/2020 influenza season. Data from the 2020-2021 influenza season are not included in the average tested calculation due to the unusually low incidence of influenza.

Number of Positive Influenza A Specimens by Region and Duty Status

Region	Week 13		Week 14		Week 15		Week 16	
	AD	Non-AD	AD	Non-AD	AD	Non-AD	AD	Non-AD
RHC-A	39	25	40	32	35	46	22	39
RHC-C	34	35	62	27	51	28	37	59
RHC-E	25	12	42	11	17	11	13	12
RHC-P	0	0	0	0	1	0	1	2

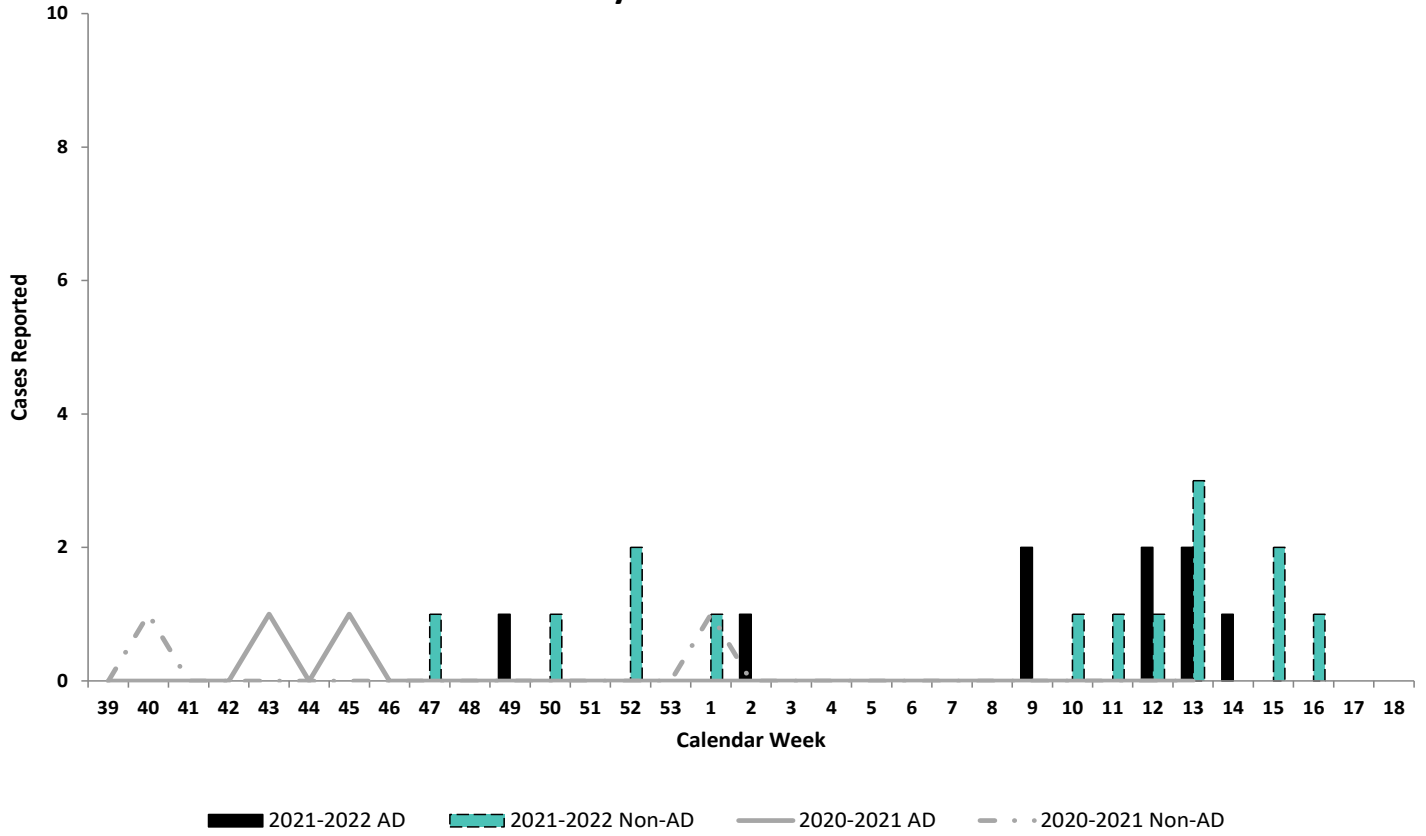
U.S. Army Public Health Center
**Army Influenza
Activity Report**
Week ending 23 April 2022 (Week 16)

Positive Respiratory Specimen Results from Army MTFs by Age Group and Beneficiary Status, Week 16





Army Influenza-Associated Hospitalizations Reported in DRSi by Onset Week

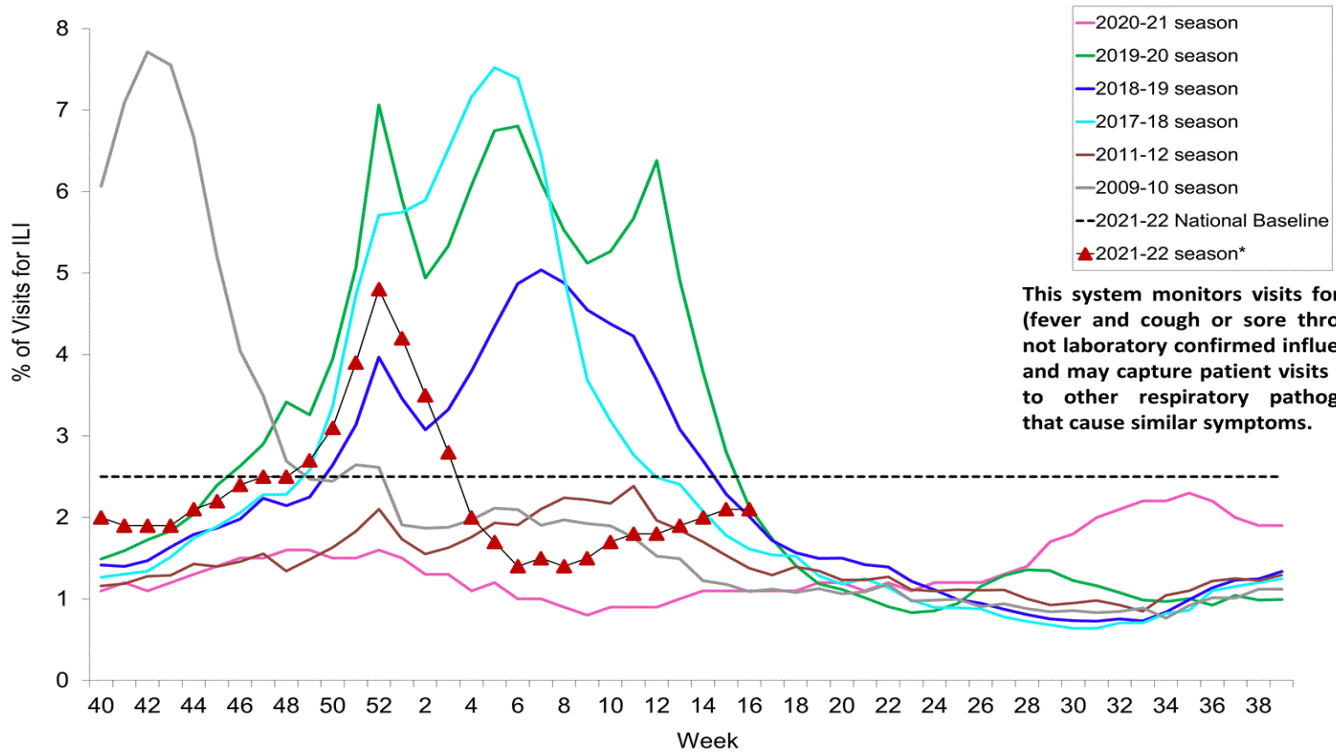


U.S. Army Public Health Center

Army Influenza Activity Report

Week ending 23 April 2022 (Week 16)

Percentage of Outpatient Visits for Respiratory Illness Reported By The U.S. Outpatient Influenza-like Illness Surveillance Network (ILINet), Weekly National Summary, 2021-2022* and Selected Previous Seasons



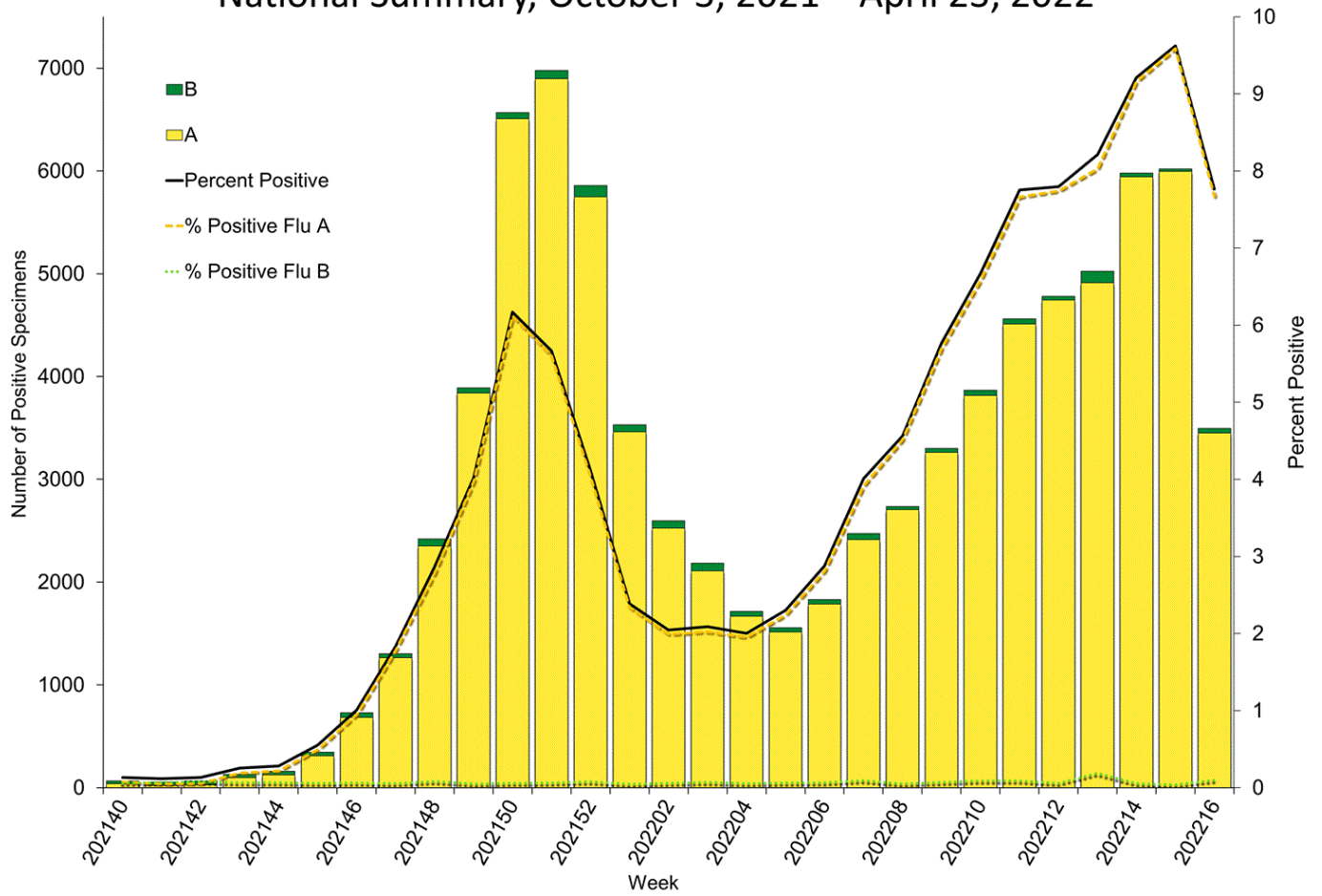
This system monitors visits for ILI (fever and cough or sore throat), not laboratory confirmed influenza and may capture patient visits due to other respiratory pathogens that cause similar symptoms.

Source: Centers for Disease Control and Prevention (CDC)

U.S. Army Public Health Center
Army Influenza Activity Report

Week ending 23 April 2022 (Week 16)

Influenza Positive Tests Reported to CDC by U.S. Clinical Laboratories, National Summary, October 3, 2021 – April 23, 2022

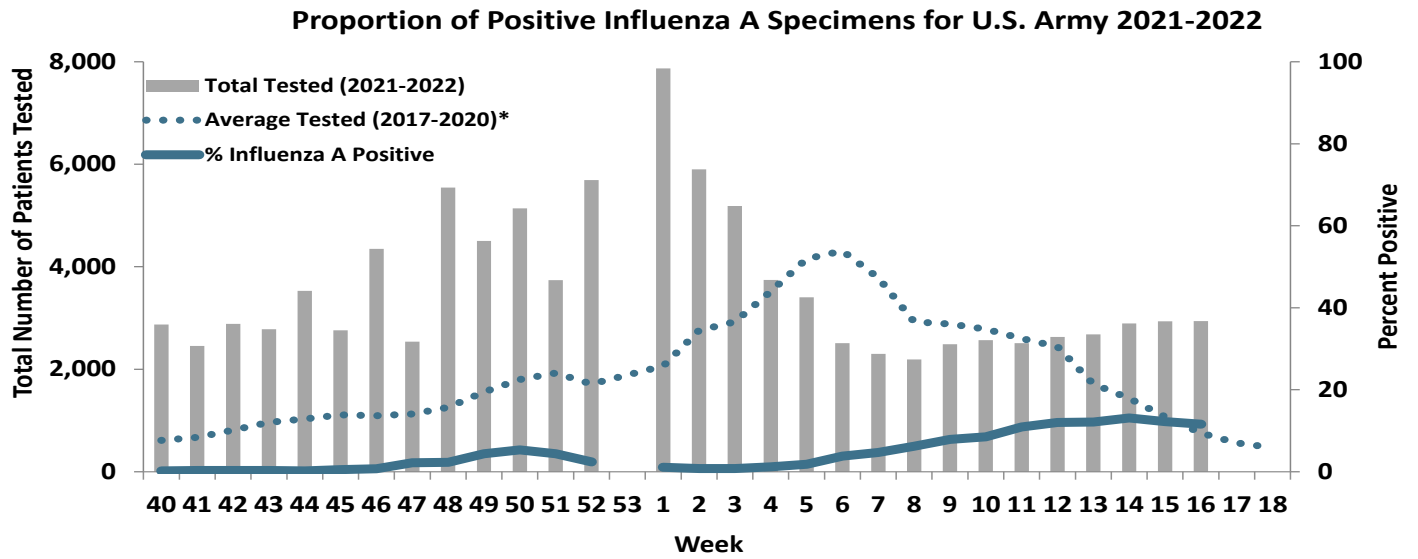


Source: Centers for Disease Control and Prevention (CDC)

U.S. Army Public Health Center

Army Influenza Activity Report

Week ending 23 April 2022 (Week 16)



*2017/2018 influenza season - 2019/2020 influenza season. Data from the 2020-2021 influenza season are not included in the average tested calculation due to the unusually low incidence of influenza.